

Partners HealthCare

Office of Continuing Professional Development

May 6, 2020 Newsletter

Submitting COVID-19 Activities for CME

- COVID-19 learning and training activities can receive CME credit under different guidelines. We have a proposal form, Rapid COVID-19 CME Proposal, that can be used for coronavirus educational activities. Please note: this form should not be filled out for sessions that are part of an already-established in-hospital series (i.e. grand rounds, M&M, case conference, etc.)

- Link to form:

<https://av192.infusionsoft.com/app/form/web-form-submitted1>

- COVID-19 Proposal Examples:

- Partners-Wide Ventilator Planning
- BWH Intubation and Procedures in the ICU
- How to Manage Critically Ill COVID-19 Patients at MGH

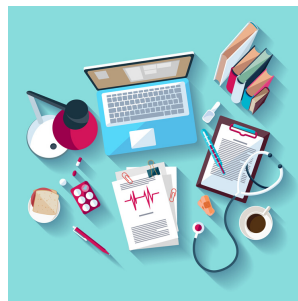
- Currently, **we do not need to collect COVID-19 planner or speaker disclosure forms, resolve or disclose information.** Please note, as always, employees or owners of pharmaceutical companies or device manufacturers should not facilitate any activity.

COVID-19 Archived Activities

- **MGH Medical Grand Rounds:**
<https://cpd.partners.org/mgh-medical-grand-rounds-archived>



Partners CPD Offerings



Each newsletter, we will feature a different segment of the Office of Continuing Professional Development at Partners HealthCare

Courses

we are accepting proposals for programs *unrelated* to COVID-19. our office will provide assistance in converting the program into a virtual format.

MOC II

lifelong learning and self-assessment

MOC IV

practice improvement projects that help improve patient care

Learning Groups

"group" learners with content such as courses, discussions, and news items. Groups can be public or private and can use a different website theme from the main website.

Risk Management

risk management study must include instruction in medical malpractice prevention, such as risk identification, patient safety, loss prevention, etc.

"No matter what you're going through, there's a light at the end of the tunnel." – Demi Lovato

If you have any questions, please do not hesitate to reach out to us at PartnersCPD@partners.org

For more information, please visit:
<https://cpd.partners.org/>